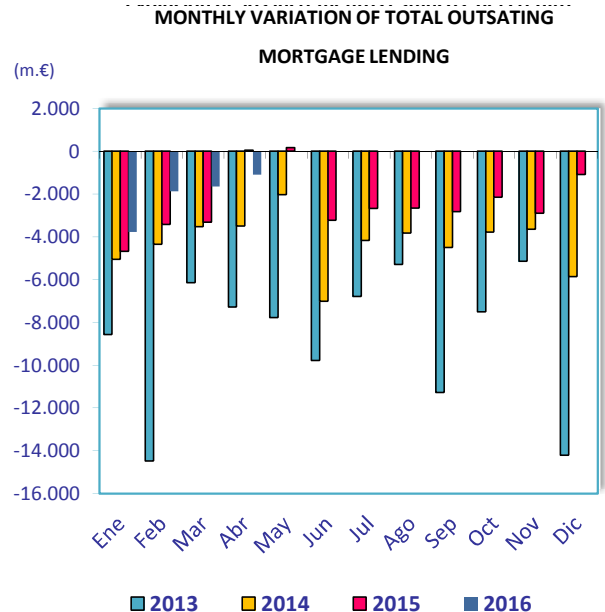
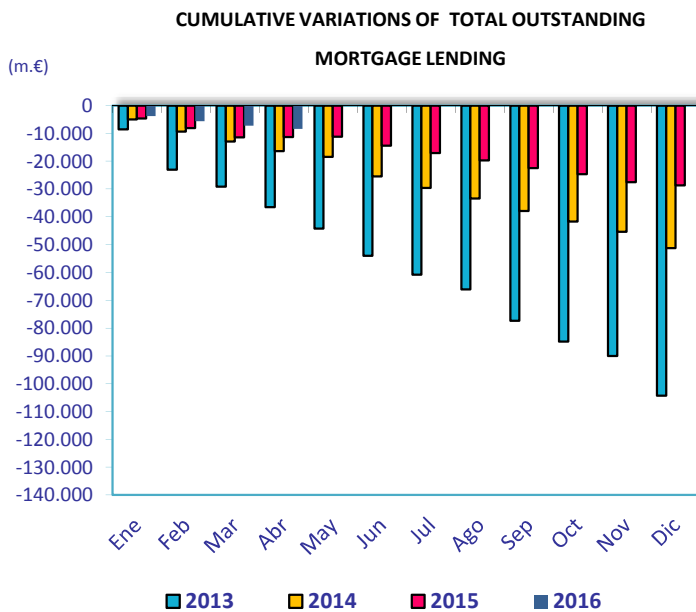


MORTGAGE CREDIT ACTIVITY APRIL 2016

| | abr-16 | abr-15 | Percentage variations (%) | | | Absolute variations (m.€) | | |
|---|----------------|----------------|---------------------------|--------------|--------------|---------------------------|---------------|---------------|
| | (m.€) | (m.€) | Yearly | Monthly | Cumulative | Yearly | Monthly | Cumulative |
| TOTAL OUTSTANDING MORTGAGE LENDING¹ | 684.132 | 709.834 | -3,62 | -0,16 | -1,21 | -25.703 | -1.090 | -8.386 |
| Total banks and saving banks | 622.452 | 646.234 | -3,7 | -0,17 | -1,3 | -23.782 | -1.030 | -7.919 |
| Cooperative | 52.811 | 53.760 | -1,8 | -0,11 | -0,7 | -949 | -60 | -386 |
| Financial credit institutions | 8.869 | 9.840 | -9,9 | 0 | -0,9 | -971 | 0 | -80 |
| Of which: Inside Balance Sheets | 673.983 | 697.794 | -3,4 | -0,15 | -1,1 | -23.810 | -990 | -7.754 |
| Total banks and saving banks | 613.345 | 635.451 | -3,5 | -0,2 | -1,2 | -22.106 | -935 | -7.321 |
| Cooperative | 52.488 | 53.349 | -1,6 | -0,11 | -0,7 | -861 | -55 | -369 |
| Financial credit institutions | 8.151 | 8.994 | -9,4 | 0 | -0,8 | -843 | 0 | -64 |
| Of which: Outside Balance Sheets (MBS)² | 10.149 | 12.041 | -15,7 | -1,0 | -5,9 | -1.892 | -100 | -632 |
| Total banks and saving banks | 9.107 | 10.783 | -15,5 | -1,0 | -6,2 | -1.676 | -95 | -599 |
| Cooperative | 323 | 411 | -21,4 | -1,5 | -5,2 | -88 | -5 | -18 |
| Financial credit institutions | 718 | 847 | -15,1 | 0,0 | -2,1 | -128 | 0 | -16 |

1) Total outstanding of mortgage loans in March 2016 includes 129,489 million Euro of MBS (See Circular 4/2004 of Bank of Spain about new rules of accountancy for credit institutions)

2) It refers to MBS outside credit institutions balance sheets.



| | abr-16 | abr-15 | Percentage variations (%) | | | Absolute variations (m.€) | | |
|-------------------------------|----------------|----------------|---------------------------|-------------|------------|---------------------------|---------------|---------------|
| | (m.€) | (m.€) | Yearly | Monthly | Cumulative | Yearly | Monthly | Cumulative |
| TOTAL OUTSTANDING MBS | 138.520 | 131.469 | 5,4 | -0,9 | 7,9 | 7.051 | -1.218 | 10.162 |
| Total banks and saving banks | 122.369 | 114.942 | 6,5 | -0,7 | 8,6 | 7.428 | -859 | 9.699 |
| Cooperative | 10.164 | 11.085 | -8,3 | -3,4 | 0,2 | -921 | -359 | 17 |
| Financial credit institutions | 5.986 | 5.442 | 10,0 | 0,0 | 8,1 | 544 | 0 | 446 |