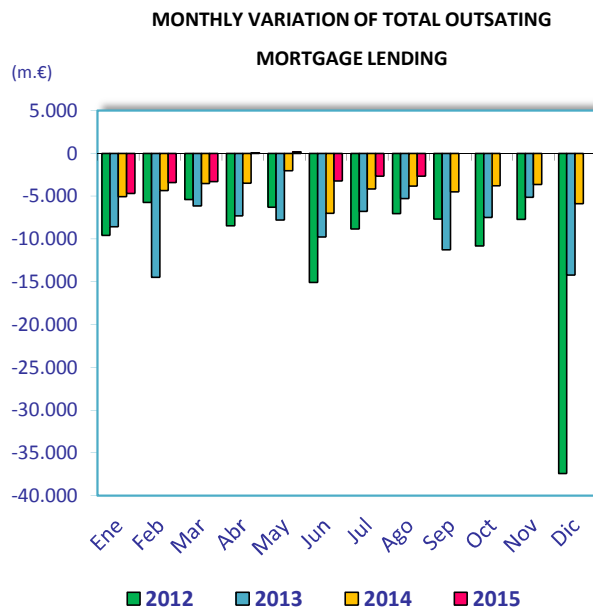
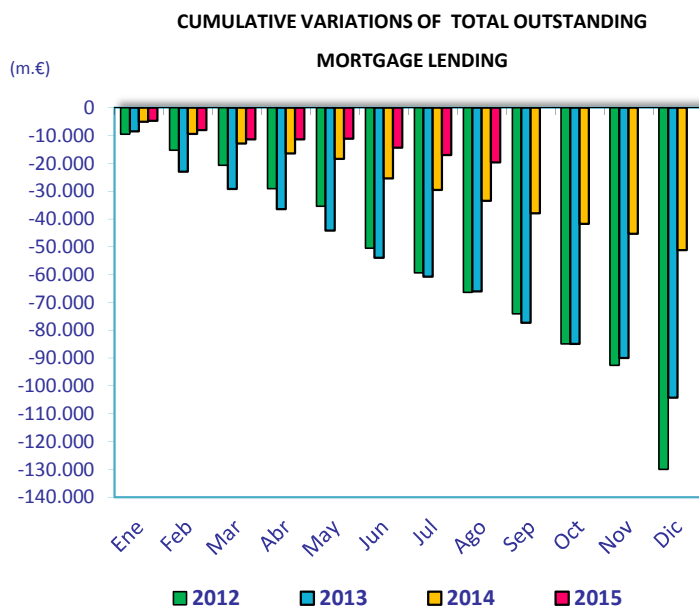


MORTGAGE CREDIT ACTIVITY AUGUST 2015

	ago-15	ago-14	Percentage variations (%)			Absolute variations (m.€)		
	(m.€)	(m.€)	Yearly	Monthly	Cumulative	Yearly	Monthly	Cumulative
TOTAL OUTSTANDING MORTGAGE LENDING¹	701.470	738.976	-5,08	-0,38	-2,73	-37.505	-2.651	-19.719
Total banks and saving banks	638.303	672.186	-5,04	-0,39	-2,76	-33.883	-2.472	-18.141
Cooperative	53.408	55.703	-4,12	-0,33	-2,03	-2.295	-178	-1.106
Financial credit institutions	9.759	11.086	-11,97	0	-5	-1.327	0	-472
Of which: Inside Balance Sheets	689.930	730.954	-5,61	-0,37	-3,42	-41.024	-2.587	-24.425
Total banks and saving banks	627.979	666.348	-5,76	-0,38	-3,52	-38.370	-2.413	-22.935
Cooperative	53.017	55.246	-4,03	-0,33	-1,97	-2.229	-174	-1.063
Financial credit institutions	8.935	9.360	-4,54	0	-5	-425	0	-427
Of which: Outside Balance Sheets (MBS)²	11.540	8.022	43,86	-0,55	68,86	3.518	-64	4.706
Total banks and saving banks	10.325	5.838	76,84	-0,57	86,68	4.486	-59	4.794
Cooperative	391	457	-14,39	-1,11	-9,80	-66	-4	-42
Financial credit institutions	824	1.726	-52,26	0	-5	-902	0	-46

1) Total outstanding of mortgage loans in June 2015 includes 122,198 million Euro of MBS (See Circular 4/2004 of Bank of Spain about new rules of accountancy for credit institutions)

2) It refers to MBS outside credit institutions balance sheets.



	ago-15	ago-14	Percentage variations (%)			Absolute variations (m.€)		
	(m.€)	(m.€)	Yearly	Monthly	Cumulative	Yearly	Monthly	Cumulative
TOTAL OUTSTANDING MBS	131.738	130.844	0,68	-0,32	-0,54	894	-416	-719
Total banks and saving banks	115.259	111.966	2,94	-0,28	-0,16123	3.293	-324	-186
Cooperative	10.691	12.008	-10,97	-0,85	-6,82348	-1.317	-92	-783
Financial credit institutions	5.788	6.870	-15,74	0	4,515934	-1.082	0	250