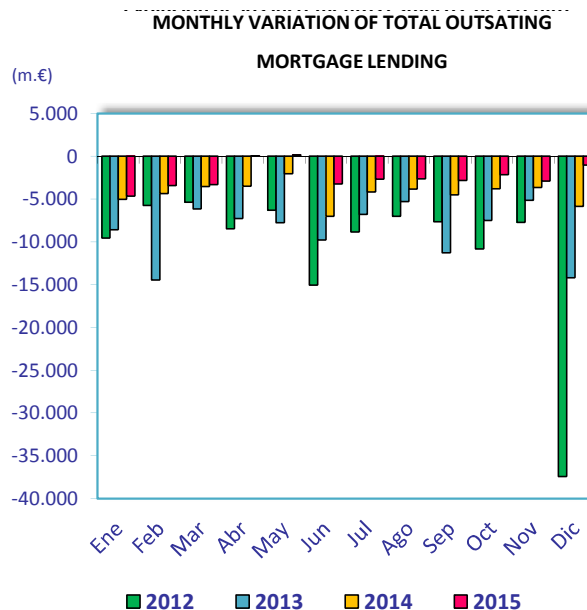
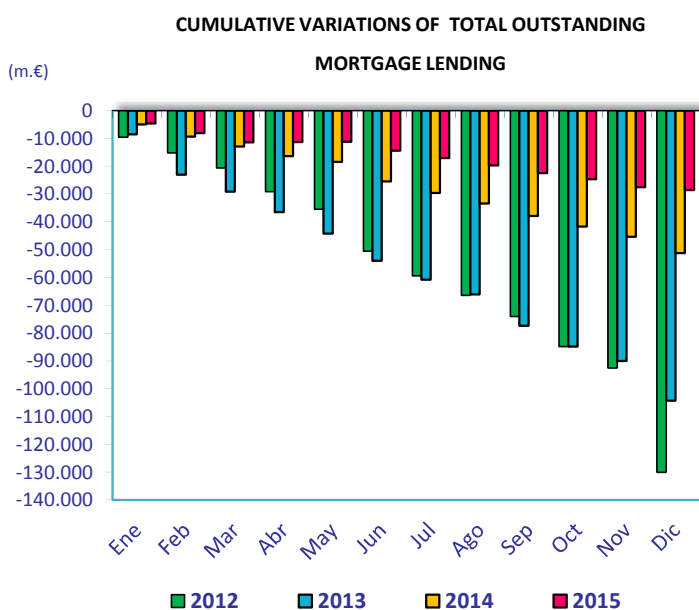


MORTGAGE CREDIT ACTIVITY DECEMBER 2015

	dic-15	dic-14	Percentage variations (%)			Absolute variations (m.€)		
	(m.€)	(m.€)	Yearly	Monthly	Cumulative	Yearly	Monthly	Cumulative
TOTAL OUTSTANDING MORTGAGE LENDING¹	692.585	721.189	-3,97	-0,15	-3,97	-28.605	-1.018	-28.605
Total banks and saving banks	630.438	656.445	-4,0	-0,15	-4,0	-26.007	-962	-26.007
Cooperative	53.198	54.513	-2,4	0,14	-2,4	-1.315	73	-1.315
Financial credit institutions	8.949	10.232	-12,5	-1	-12,5	-1.283	-130	-1.283
Of which: Inside Balance Sheets	681.804	714.355	-4,6	-0,10	-4,6	-32.551	-653	-32.551
Total banks and saving banks	620.732	650.914	-4,6	-0,1	-4,6	-30.182	-670	-30.182
Cooperative	52.857	54.080	-2,3	0,15	-2,3	-1.223	80	-1.223
Financial credit institutions	8.215	9.362	-12,3	-1	-12,3	-1.147	-63	-1.147
Of which: Outside Balance Sheets (MBS)²	10.780	6.834	57,7	-3,3	57,7	3.946	-365	3.946
Total banks and saving banks	9.705	5.531	75,5	-2,9	75,5	4.175	-292	4.175
Cooperative	341	434	-21,4	-1,8	-21,4	-93	-6	-93
Financial credit institutions	734	870	-15,6	-8,4	-15,6	-136	-67	-136

1) Total outstanding of mortgage loans in December 2015 includes 117,577 million Euro of MBS (See Circular 4/2004 of Bank of Spain about new rules of accountancy for credit institutions)

2) It refers to MBS outside credit institutions balance sheets.



	dic-15	dic-14	Percentage variations (%)			Absolute variations (m.€)		
	(m.€)	(m.€)	Yearly	Monthly	Cumulative	Yearly	Monthly	Cumulative
TOTAL OUTSTANDING MBS	128.357	132.457	-3,1	1,1	-3,1	-4.100	1.351	-4.100
Total banks and saving banks	112.670	115.445	-2,4	1,5	-2,4	-2.775	1.635	-2.775
Cooperative	10.147	11.474	-11,6	-1,3	-11,6	-1.327	-138	-1.327
Financial credit institutions	5.540	5.538	0,0	-2,6	0,0	2	-147	2