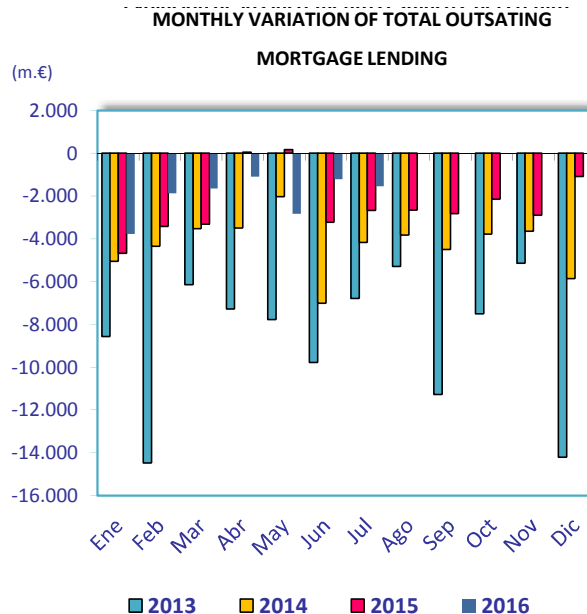
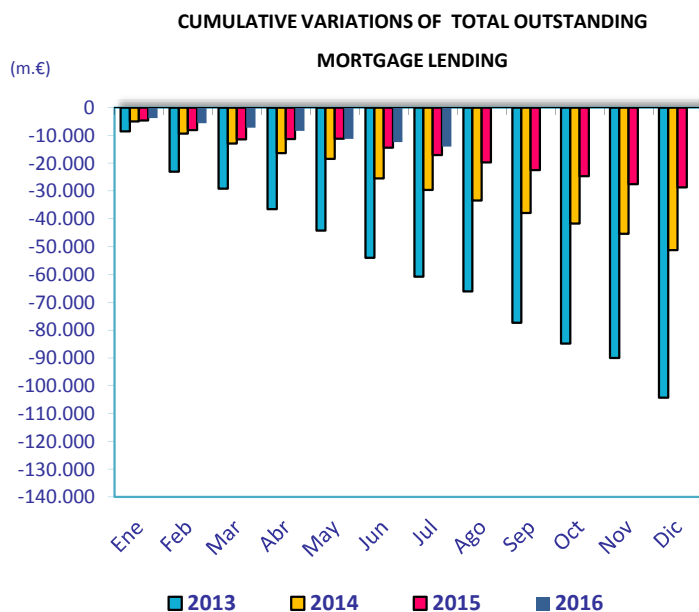


**MORTGAGE CREDIT ACTIVITY JULY 2016**

	jul-16	jul-15	Percentage variations (%)			Absolute variations (m.€)		
	(m.€)	(m.€)	Yearly	Monthly	Cumulative	Yearly	Monthly	Cumulative
<b>TOTAL OUTSTANDING MORTGAGE LENDING<sup>1</sup></b>	<b>678.545</b>	<b>704.121</b>	<b>-3,63</b>	<b>-0,23</b>	<b>-2,02</b>	<b>-25.576</b>	<b>-1.541</b>	<b>-13.973</b>
Total banks and saving banks	617.258	640.776	-3,7	-0,26	-2,1	-23.517	-1.606	-13.113
Cooperative	52.550	53.586	-1,9	0,12	-1,2	-1.036	64	-647
Financial credit institutions	8.736	9.759	-10,5	0	-2,4	-1.023	0	-213
<b>Of which: Inside Balance Sheets</b>	<b>668.735</b>	<b>692.517</b>	<b>-3,4</b>	<b>-0,22</b>	<b>-1,9</b>	<b>-23.783</b>	<b>-1.451</b>	<b>-13.002</b>
Total banks and saving banks	608.459	630.392	-3,5	-0,2	-2,0	-21.932	-1.519	-12.206
Cooperative	52.239	53.191	-1,8	0,13	-1,2	-951	68	-617
Financial credit institutions	8.036	8.935	-10,1	0	-2,2	-899	0	-179
<b>Of which: Outside Balance Sheets (MBS)<sup>2</sup></b>	<b>9.810</b>	<b>11.604</b>	<b>-15,5</b>	<b>-0,9</b>	<b>-9,0</b>	<b>-1.793</b>	<b>-91</b>	<b>-970</b>
Total banks and saving banks	8.799	10.384	-15,3	-1,0	-9,3	-1.585	-87	-906
Cooperative	311	396	-21,4	-1,2	-8,8	-85	-4	-30
Financial credit institutions	701	824	-15,0	0,0	-4,6	-123	0	-34

1) Total outstanding of mortgage loans in June 2016 includes 128,838 million Euro of MBS (See Circular 4/2004 of Bank of Spain about new rules of accountancy for credit institutions)

2) It refers to MBS outside credit institutions balance sheets.



	jul-16	jul-15	Percentage variations (%)			Absolute variations (m.€)		
	(m.€)	(m.€)	Yearly	Monthly	Cumulative	Yearly	Monthly	Cumulative
<b>TOTAL OUTSTANDING MBS</b>	<b>138.648</b>	<b>132.154</b>	<b>4,9</b>	<b>-0,2</b>	<b>8,0</b>	<b>6.494</b>	<b>-252</b>	<b>10.291</b>
Total banks and saving banks	122.559	115.583	6,0	-0,4	8,8	6.976	-507	9.889
Cooperative	10.221	10.783	-5,2	2,6	0,7	-561	254	74
Financial credit institutions	5.868	5.788	1,4	0,0	5,9	79	0	328