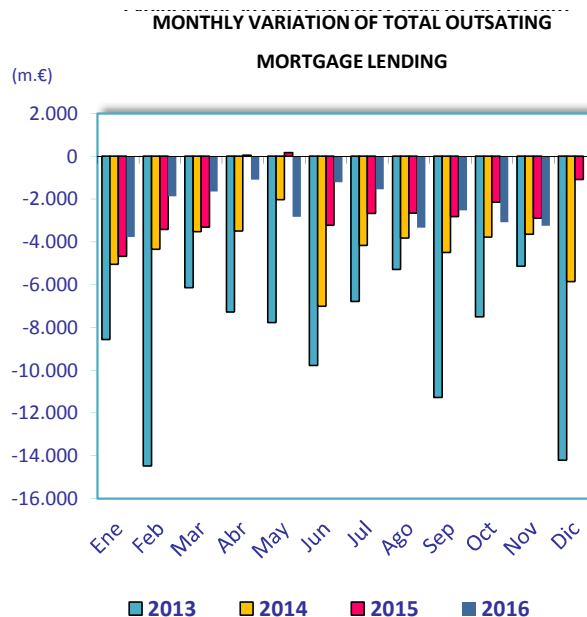
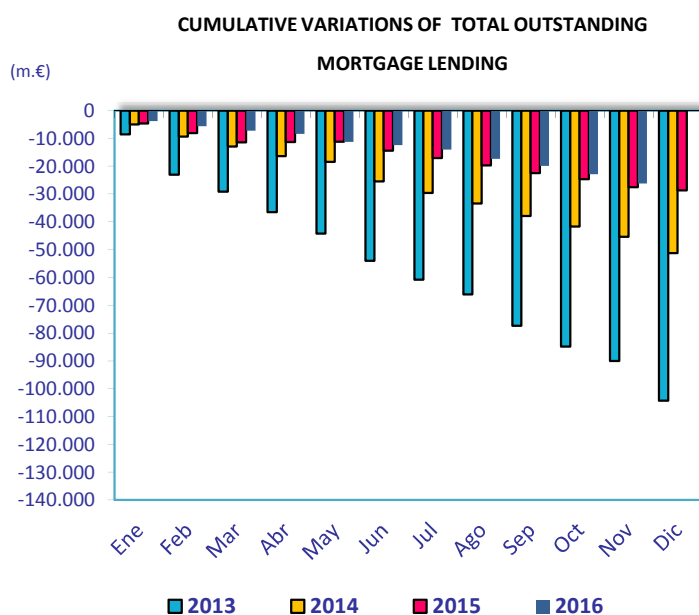


MORTGAGE CREDIT ACTIVITY NOVEMBER 2016

	nov-16	nov-15	Percentage variations (%)			Absolute variations (m.€)		
	(m.€)	(m.€)	Yearly	Monthly	Cumulative	Yearly	Monthly	Cumulative
TOTAL OUTSTANDING MORTGAGE LENDING¹	666.348	693.603	-3,93	-0,5	-3,78	-27.255	-3.241	-26.169
Total banks and saving banks	605.559	631.400	-4,1	-0,5	-3,9	-25.841	-3.201	-24.813
Cooperative	52.128	53.124	-1,9	-0,1	-2,0	-996	-40	-1.069
Financial credit institutions	8.661	9.079	-4,6	0,0	-3,2	-418	0	-288
Of which: Inside Balance Sheets	657.311	682.457	-3,7	-0,5	-3,6	-25.146	-3.112	-24.426
Total banks and saving banks	597.501	621.402	-3,8	-0,5	-3,7	-23.901	-3.076	-23.165
Cooperative	51.833	52.777	-1,8	-0,1	-1,9	-944	-36	-1.023
Financial credit institutions	7.977	8.278	-3,6	0,0	-2,9	-301	0	-238
Of which: Outside Balance Sheets (MBS)²	9.037	11.145	-18,9	-1,4	-16,2	-2.108	-129	-1.743
Total banks and saving banks	8.057	9.997	-19,4	-1,5	-17,0	-1.940	-125	-1.648
Cooperative	295	347	-15,0	-1,3	-13,5	-52	-4	-46
Financial credit institutions	685	801	-14,5	0,0	-6,7	-116	0	-49

1) Total outstanding of mortgage loans in October 2016 includes 127,520 million Euro of MBS (See Circular 4/2004 of Bank of Spain about new rules of accountancy for credit institutions)

2) It refers to MBS outside credit institutions balance sheets.



	nov-16	nov-15	Percentage variations (%)			Absolute variations (m.€)		
	(m.€)	(m.€)	Yearly	Monthly	Cumulative	Yearly	Monthly	Cumulative
TOTAL OUTSTANDING MBS	136.557	127.006	7,5	1,1	6,4	9.550	1.523	8.200
Total banks and saving banks	120.940	111.035	8,9	1,4	7,3	9.905	1.616	8.270
Cooperative	9.842	10.285	-4,3	-0,9	-3,0	-443	-93	-305
Financial credit institutions	5.774	5.686	1,5	0,0	4,2	88	0	235