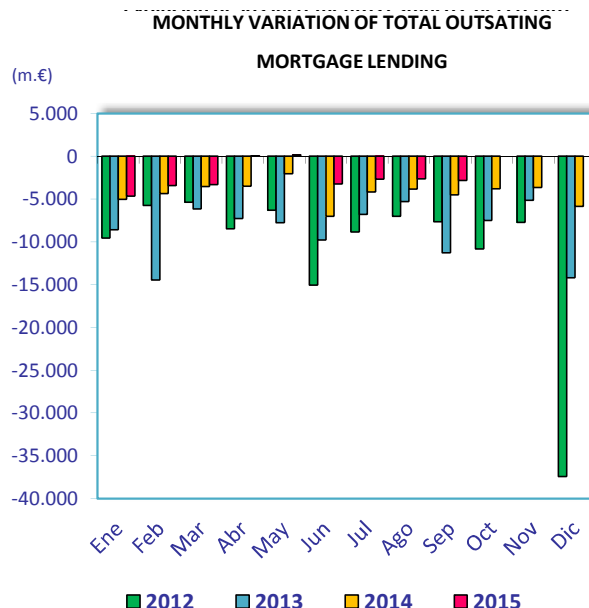
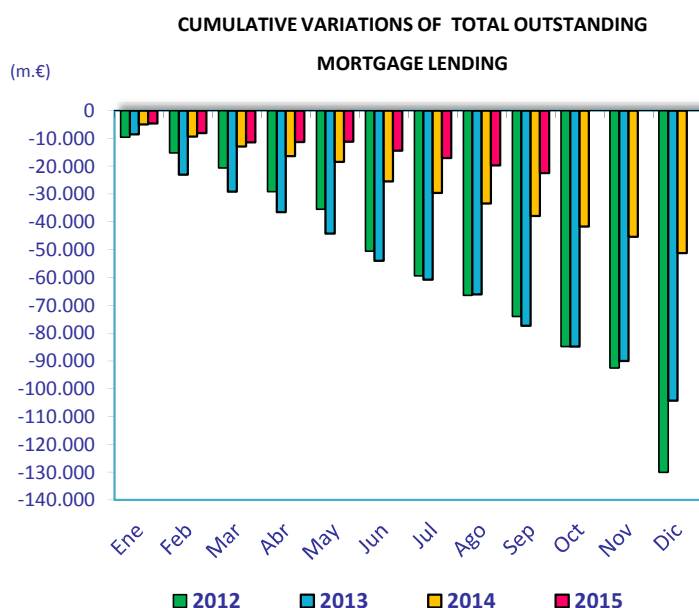


MORTGAGE CREDIT ACTIVITY SEPTEMBER 2015

	sep-15	sep-14	Percentage variations (%)			Absolute variations (m.€)		
	(m.€)	(m.€)	Yearly	Monthly	Cumulative	Yearly	Monthly	Cumulative
TOTAL OUTSTANDING MORTGAGE LENDING¹	698.652	734.482	-4,88	-0,40	-3,12	-35.830	-2.818	-22.537
Total banks and saving banks	636.235	668.772	-4,87	-0,32	-3,08	-32.537	-2.068	-20.209
Cooperative	53.338	55.490	-3,88	-0,13	-2,16	-2.152	-70	-1.175
Financial credit institutions	9.079	10.219	-11,16	-7	-11	-1.140	-680	-1.153
Of which: Inside Balance Sheets	687.288	727.339	-5,51	-0,38	-3,79	-40.051	-2.642	-27.067
Total banks and saving banks	626.029	662.978	-5,57	-0,31	-3,82	-36.950	-1.950	-24.885
Cooperative	52.982	55.039	-3,74	-0,07	-2,03	-2.057	-35	-1.098
Financial credit institutions	8.278	9.323	-11,21	-7	-12	-1.045	-657	-1.084
Of which: Outside Balance Sheets (MBS)²	11.364	7.142	59,11	-1,52	66,29	4.222	-176	4.530
Total banks and saving banks	10.207	5.794	76,16	-1,14	84,54	4.413	-118	4.676
Cooperative	357	452	-21,08	-8,84	-17,77	-95	-35	-77
Financial credit institutions	801	897	-10,68	-3	-8	-96	-23	-69

1) Total outstanding of mortgage loans in September 2015 includes 118,787 million Euro of MBS (See Circular 4/2004 of Bank of Spain about new rules of accountancy for credit institutions)

2) It refers to MBS outside credit institutions balance sheets.



	sep-15	sep-14	Percentage variations (%)			Absolute variations (m.€)		
	(m.€)	(m.€)	Yearly	Monthly	Cumulative	Yearly	Monthly	Cumulative
TOTAL OUTSTANDING MBS	130.151	128.758	1,08	-1,20	-1,74	1.394	-1.587	-2.306
Total banks and saving banks	113.989	110.918	2,77	-1,10	-1,26137	3.071	-1.270	-1.456
Cooperative	10.476	11.910	-12,04	-2,01	-8,69538	-1.434	-215	-998
Financial credit institutions	5.686	5.930	-4,11	-2	2,674954	-243	-102	148